

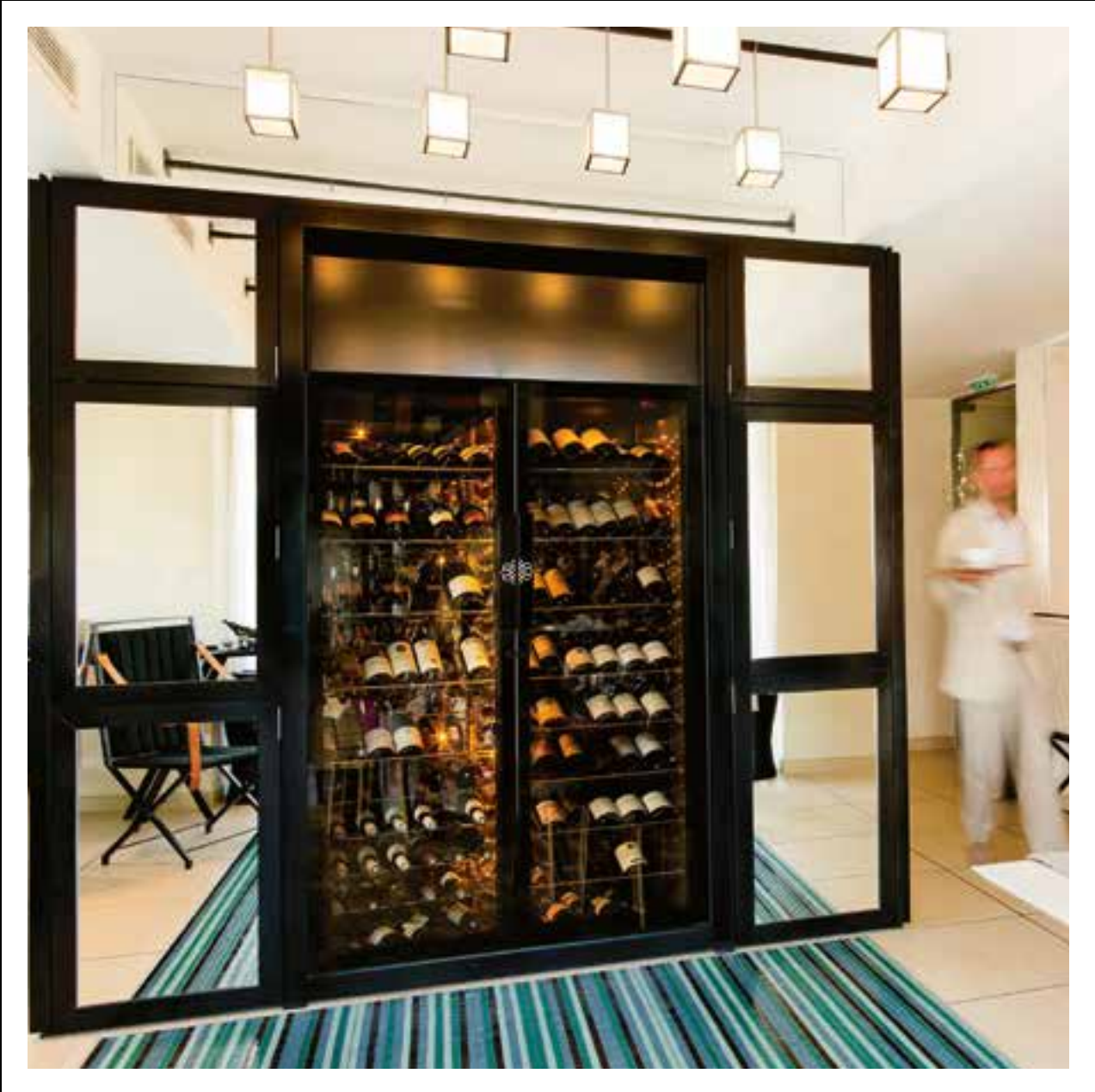
EUROCAVE

PROFESSIONAL

Solutions pour la mise en valeur et le service du vin*

Série 9000

* Solutions for merchandising and the service of wine - ** ShowCave : your wine display



** ShowCave, la vitrine de vos vins

Mode d'emploi • Technical Manual • Gebrauchsanweisung • Modo de
empleo • Mode d'emploi • Technical Manual • Gebruiksaanwijzing
Modo de empleo • Mode d'emploi • Istruzioni per l'uso
Gebrauchsanweisung • Modo de empleo • Mode d'emploi

10 - CARACTÉRISTIQUES TECHNIQUES

Réf.	Dimensions en (mm)			Poids à vide (kg)	Limites d'utilisation		Consommation par 24h* (kWh)
	H	L	P**		T° mini	T° maxi	
9090V	2190	692	499	172	15°C	25°C	2,75
9180V	2190	1284	499	270	15°C	25°C	8,9

*Consommation par 24 h mesurée avec une température extérieure de 25°C et une consigne de température réglée à 12°C.
Précision régulation : +/- 1 °C - Précision affichage : +/- 0,5°C.

** Hors poignée (+38 mm).

Votre produit répond aux normes suivantes :

I SÉCURITÉ (article 3. de la directive 2006/95/EC)
Norme(s) EN60335-1 : 2001 + A1 + A2
EN60335-2-24 : 2002 + A1 + A2

2 CEM (Article 3. de la directive 2004/108/EC)
Norme(s) EN55014-1/2

11 - TEMPÉRATURES USUELLES DE SERVICE DES VINS

Vins français

Alsace	10°C
Beaujolais	13°C
Bordeaux Blanc Liqueureux	6°C
Bordeaux Blanc Sec	8°C
Bordeaux Rouge	17°C
Bourgogne Blanc	11°C
Bourgogne Rouge	18°C
Champagne	6°C
Jura	10°C
Languedoc-Roussillon	13°C
Provence Rosé	12°C
Savoie	9°C
Vins de Loire Blanc Sec	10°C
Vins de Loire Liqueureux	7°C
Vins de Loire Rouge	14°C
Vins du Rhône	15°C
Vins du Sud Ouest Liqueureux	7°C
Vins du Sud Ouest Rouge	15°C

Vins australiens

Cabernet franc	16°C
Cabernet sauvignon	17°C
Chardonnay	10°C
Merlot	17°C
Muscat à petit grain	6°C
Pinot noir	15°C
Sauvignon blanc	8°C
Semillon	8°C
Shiraz	18°C
Verdhelo	7°C

Autres vins

Californie	16°C
Chili	15°C
Espagne	17°C
Italie	16°C

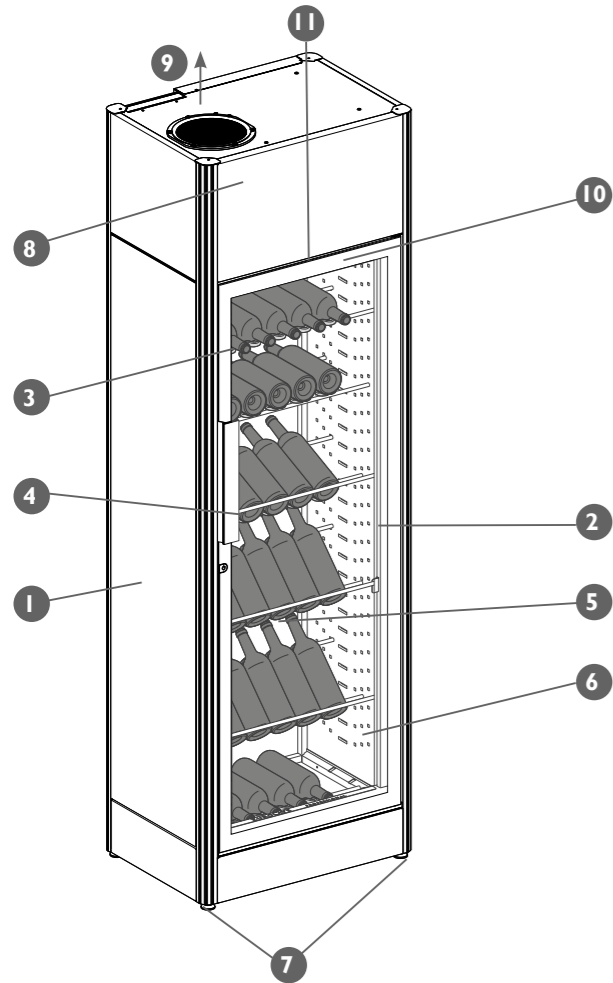
CONTENTS

1 • DESCRIPTION OF YOUR SHOWCAVE	p. 2
I- 9090V model (1 door)	p. 2
II- 9180V model (2 doors)	p. 2
2 • IMPORTANT SAFETY RECOMMENDATIONS	p. 3
3 • POWER SUPPLY	p. 3
4 • CARING FOR THE ENVIRONMENT AND ENERGY SAVING	p. 4
5 • INSTALLING YOUR SHOWCAVE	p. 4-5
6 • LAYOUT - STORAGE	
I- Modular, adaptable storage	p. 6
II- Layout advice for your ShowCave	p. 7
III- Modifying the layout of your ShowCave	p. 7
7 • COMMISSIONING YOUR SHOWCAVE	
I- Connection	p. 7
I- Switching on	p. 7
III- Description of the control panel	p. 8
IV- Temperature setting	p. 8
8 • EVERDAY MAINTENANCE	p. 9
9 • OPERATING FAULTS	p. 9
10 • TECHNICAL FEATURES	p. 10
11 • STANDARD WINE SERVING TEMPERATURES	p. 10



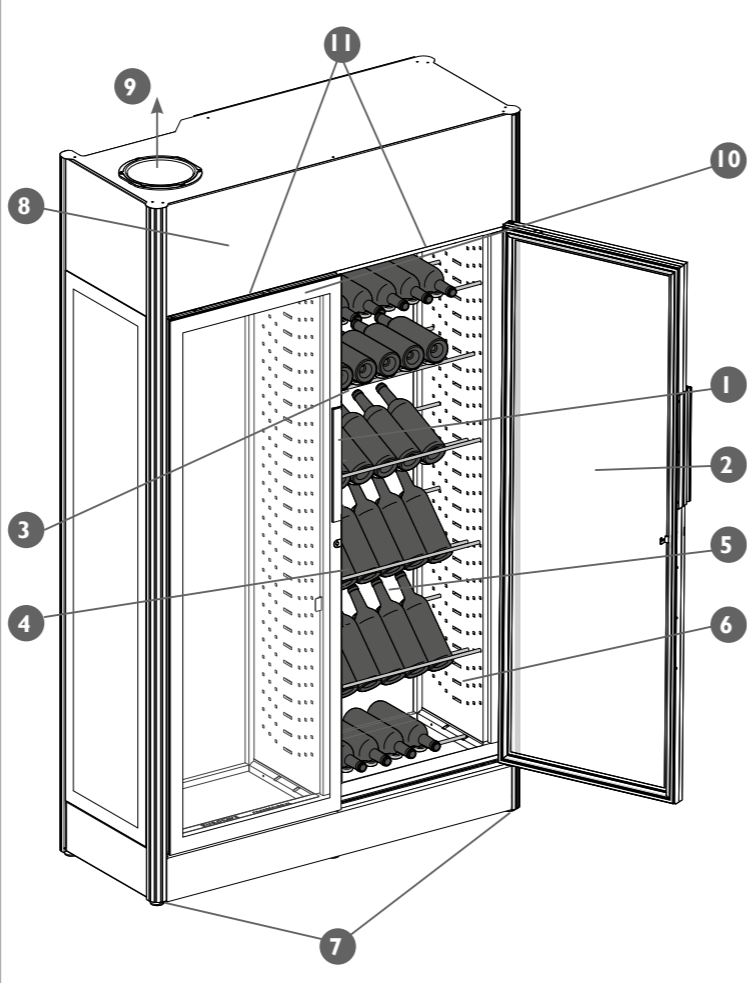
I - DESCRIPTION OF YOUR SHOWCAVE

I - 9090V Model



- 1 - ShowCave cabinet body
- 2 - Full Glass door with detachable handle and key lock
- 3 - "Main du Sommelier" bottle support in "storage" position
- 4 - "Main du Sommelier" bottle support in "display" position
- 5 - Back with mirror finish
- 6 - Transparent walls (PMMA)
- 7 - 4 adjustable feet for levelling
- 8 - Cooling unit
- 9 - Fan outlet
- 10 - Control panel
- 11 - Lighting (9 LEDs)

II - 9180V Model



- 1 - ShowCave cabinet body
- 2 - Full Glass door with detachable handle and key lock
- 3 - "Main du Sommelier" bottle support in "storage" position
- 4 - "Main du Sommelier" bottle support in "display" position
- 5 - Back with mirror finish
- 6 - Transparent walls (PMMA)
- 7 - 6 adjustable feet for levelling
- 8 - Cooling unit
- 9 - Fan outlet
- 10 - Control panel
- 11 - Lighting (9 LEDs)



2 - IMPORTANT SAFETY RECOMMENDATIONS

Warning!

When using your ShowCave, observe certain basic precautions, notably:

- Only use ShowCave for the purpose for which it was designed, as described in this guide.
- Never unplug your ShowCave by pulling the power cable. Firmly grasp the plug and pull to remove it from the wall socket. Never use a damaged power cable or one showing signs of wear along its length.
- Immediately replace damaged power cables.
- Do not allow children to hang from, climb, sit or stand on your ShowCave's bottle supports. They could damage your ShowCave and seriously injure themselves.
- Make sure that you always keep keys out of reach of children, to prevent them from locking themselves inside the cabinet.
- This appliance is only intended for wine storage.
- This appliance was not designed to be used by people (including children) with reduced mental, sensory or physical abilities or who lack experience and knowledge, unless they are supervised or have been given instructions on how to use the appliance by a person responsible for their safety. Children must be supervised to ensure that they do not play with the appliance.

N.B.: for optimal safety, the cabinet is fitted with a dual-action lock. To open or close the door, you must push the key and keep it pushed in whilst you turn it (see diagram).



- DANGER :** Risk of trapping for children. Before recycling your old wine cabinet:
- Remove the door.
 - Leave the bottle supports in place so that children cannot easily climb inside the appliance.

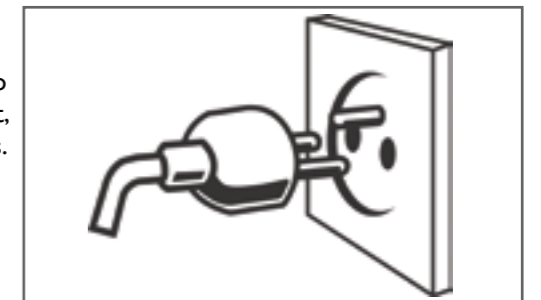
Never damage your appliance's refrigerating circuit.



3 - POWER SUPPLY

For your personal safety, your ShowCave must be correctly earthed.

The power cable of your ShowCave has a plug to be plugged into a standard earthed outlet to prevent any risk of electric shock. Have the power supply socket checked by a qualified electrician who will tell you whether or not it is correctly earthed and will carry out, if necessary, work to bring it into compliance with current standards. Contact your usual EuroCave retailer to change the power cable if it is damaged. It must be replaced by a EuroCave original manufacturer's part.



IMPORTANT: all work must be carried out by a qualified electrician.

Ensure that the socket is correctly earthed and that your installation is protected by a circuit breaker (30 mA*).

*not applicable to some countries

If you are moving abroad, first check that the cabinet's supply characteristics correspond to the country you are moving to (voltage, frequency).

4 - CARING FOR THE ENVIRONMENT AND ENERGY SAVING

Disposing of packaging:

The packaging used by EuroCave is made from recyclable materials.

After unpacking your ShowCave, take the packaging to a refuse collection point. For the most part, it will be recycled.

Recycling: a caring gesture

Electrical and electronic equipment has potentially harmful effects on the environment and human health owing to the presence of dangerous substances.

You must never therefore trash electrical and electronic equipment with unsorted municipal waste.

When you purchase a new EuroCave product (wine cabinet, cellar conditioner, Vin au Verre), you can entrust recycling of your old appliance to your EuroCave dealer.

Talk to your EuroCave dealer; he will explain to you all the removal and collection procedures set up within the EuroCave network.

In compliance with legislation concerning protecting and caring for the environment, your ShowCave does not contain C.F.C.s.

To save energy:

- Install your ShowCave in a suitable place (see chapter 5) and observe the recommended temperature ranges.
- Keep the door open for as short a time as possible.
- Check that the seal is in good condition and that it is not damaged. If it is, contact your EuroCave retailer.

N. B.: when replacing your ShowCave, inquire at the municipal refuse department to find out the correct recycling procedure.

For refrigerant gases, substances and some parts contained in the wine cabinets, EuroCave uses recyclable materials which require a special disposal procedure.

Seal the lock to prevent children from accidentally locking themselves inside your ShowCave.

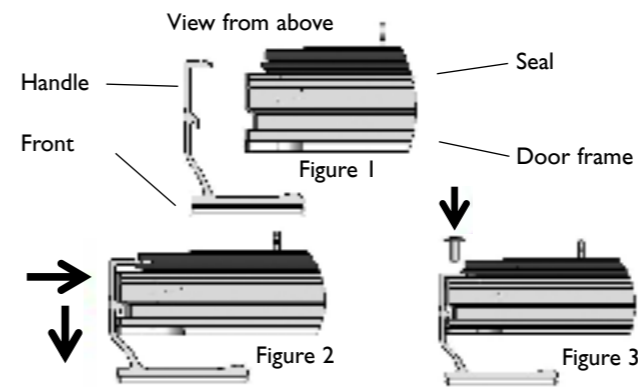
Disable unusable appliances by unplugging them and removing their power cable.



5 - INSTALLING YOUR SHOWCAVE

Fitting the handle

- Unscrew the three screws placed on the side of the door, using the Allen wrench, which you will find in the handle's box.

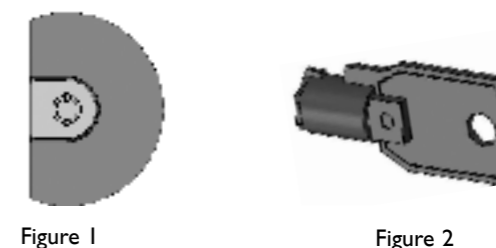


- Screw the three screws back on (figure 3).
 - Take care not to catch the seal when screwing.
- Note: adjustment of the handle is possible thanks to the oblong holes.

Door security

In order to make your cabinet secure, all doors have a lock.

Lock (figure 1) specific to Full Glass and Black Piano doors. You will find the key for this type of lock (figure 2) in the handle's box.



- Position the handle on the specially designed groove on the door frame (figure 2).
- Insert the handle all the way into the groove using a forward movement (figure 2).

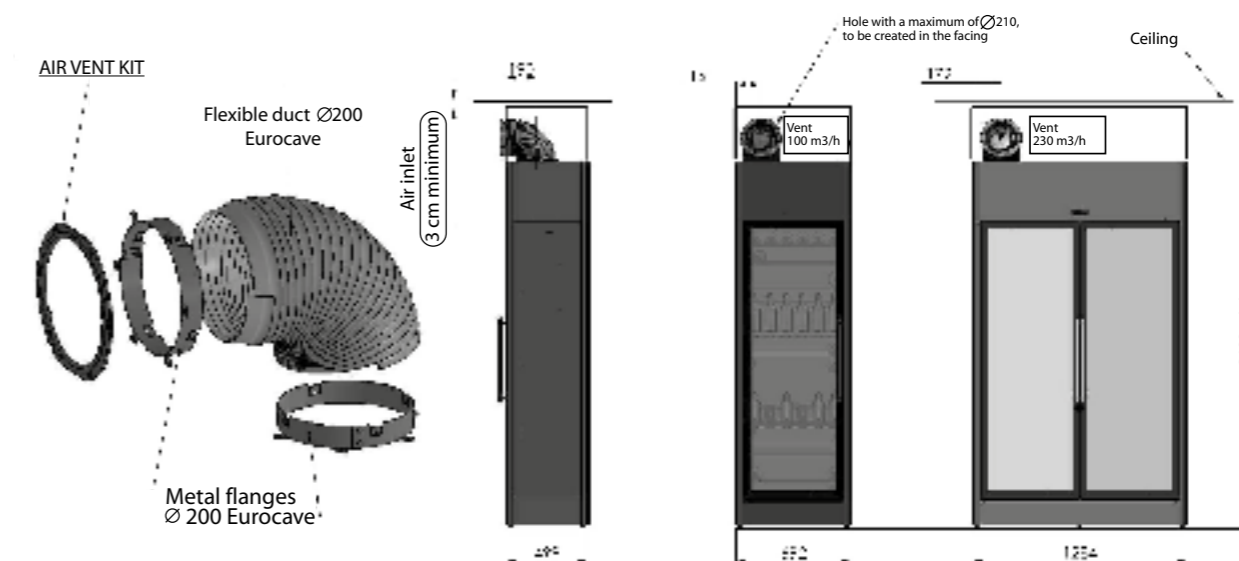
PARTICULARITIES OF A FLUSH-FITTED INSTALLATION

Models in our ShowCave range can be fully flush-fitted. However, this type of installation requires that you observe technical requirements linked to flush-fitting.

In order to guarantee that your ShowCave performs optimally when flush-fitted, we strongly recommend that you use the air vent kit, available from EuroCave.

According to the layout of your installation, please read the recommendations below carefully. For further information, contact your EuroCave retailer.

Installation recommended for flush-fitted version



N.B.: for this type of installation:

- The minimum ceiling height must be 2,400 mm
- The air inlet must be a minimum of 3 cm over its entire length
- For aesthetic reasons, the air vent outlet can also be on the left-hand side.

ShowCave with decorative filler strip	Length in mm
2 doors + 1 door	1992
2 doors + 2 doors	2584
1 door + 1 door	1400
1 door + 2 doors + 1 door	2700

5 - INSTALLING YOUR SHOWCAVE

It is essential that your ShowCave is assembled and installed by qualified technicians. This service is automatically included when you purchase your ShowCave. If this is not the case, contact your EuroCave dealer.

The points below must be observed:

When your appliance is delivered, after unpacking, check the outside of your ShowCave for damage (signs of impact, buckling...).

Open the doors and check that the inside of your appliance is intact (walls, Main du Sommelier supports + shelf rods, door stop, control panel...).

- If there is a problem, contact your EuroCave retailer.
- Decide where you are going to install your ShowCave. This place must:

- be open to the outside to allow circulation of air (not in an enclosed cupboard...),
- not be close to any source of heat,
- not be too damp (utility room, laundry room, bathroom...),
- have a flat, stable floor, which can support a weight of 500 kg.

- allow ventilation above the appliance (condenser grill) of at least 20 cm.
- be supplied with power (standard outlet, 16A, earthed with 30 mA circuit breaker)*.

(* not applicable to some countries)

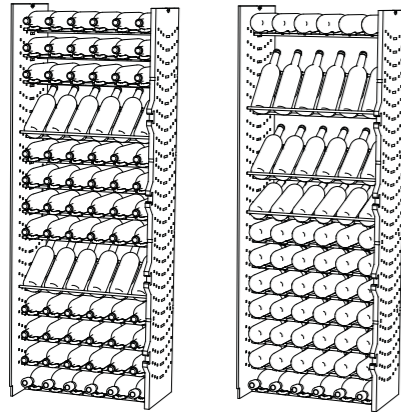
- Do not place your ShowCave in an area liable to flood.
- Prevent water from splashing on any part of the rear of the appliance.
- Do not plug several ShowCaves into an adaptor.



6 - LAYOUT – STORAGE

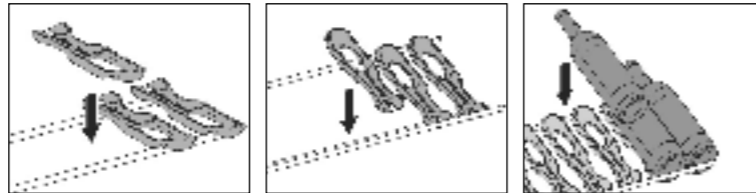
I - Modular, adaptable storage

The configuration of your ShowCave can be modified to suit your requirements. The Main du Sommelier supports can store any bottle size 75cl or 1.5 l.



Main du Sommelier support in flat position, capacity 6 bottles per row

Main du Sommelier support in display position, capacity 6 bottles per row



The “Main du Sommelier” supports can be positioned, moved, removed according to your requirements in order to adapt to the size of all your bottles.

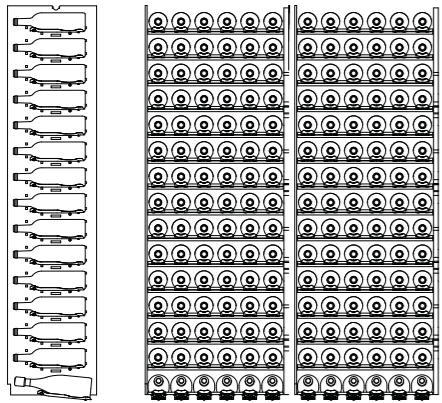
Each row of bottles can be positioned independently, for an easy, flexible layout of your ShowCave:

3 positions:

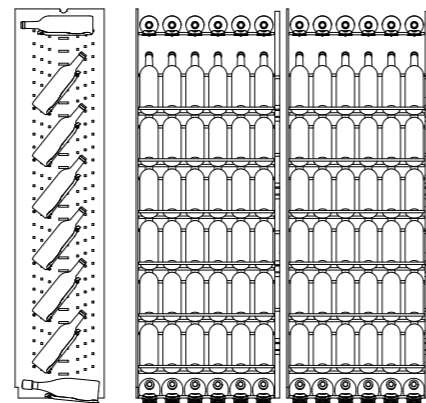
- “lying flat” for optimal storage
- “displayed with slight incline” to enhance and display your bottles
- “displayed with sharp incline” to make your bottle labels even more visible

Each bottle row is designed to store a maximum of 6 75cl bottles.

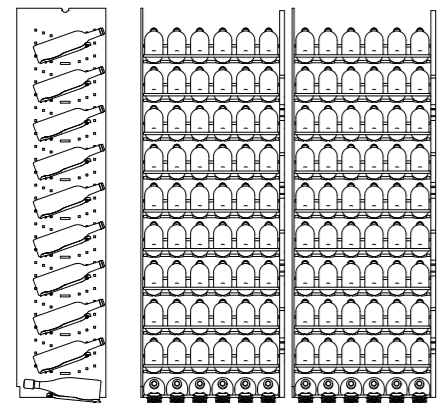
Examples of possible configurations



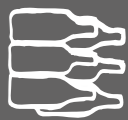
flat position
90 bottles (9090V model) or 180 bottles (9180V model)



Sharp incline display position
48 bottles (9090V model) or 96 bottles (9180V model)



display position,
60 bottles (9090V model) or 120 bottles (9180V model)



6 - LAYOUT – STORAGE

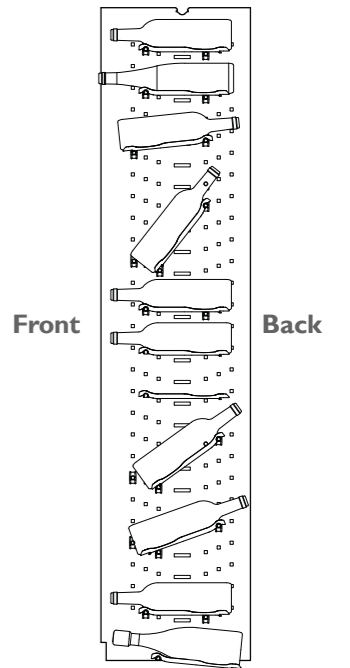
II – Layout advice for your ShowCave

Your EuroCave ShowCave was designed to safely hold a maximum number of bottles. We recommend that you follow the advice below to optimize loading.

- Distribute your bottles as uniformly as possible on the “Main du Sommelier” supports in your ShowCave (maximum of 6 75cl bottles per row) in order to spread the weight.
- Also ensure that your bottles do not touch the back mirror.

III – Modifying the layout of your ShowCave

To change the location of a bottle support, first unload the area concerned, then remove the “Main du Sommelier” supports as well as the stainless steel rods. Finally, move the rod supports taking care to reposition them according to the diagram opposite:



7 - COMMISSIONING YOUR SHOWCAVE

I - Connection

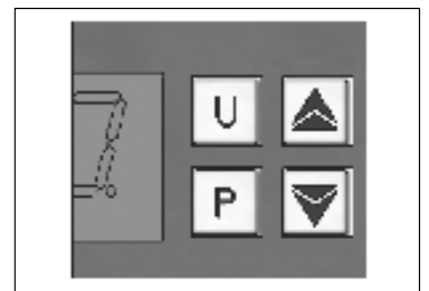
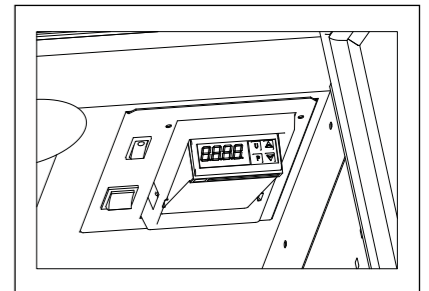
Check that your socket is correctly supplied with power (presence of correct sized fuses, 30 mA* circuit breaker, in working order) (*not applicable to some countries).

Wait 48hrs before commissioning.

II – Switching on

The control of your ShowCave is built into the upper wall of the right-hand compartment. To make it appear, press it firmly (push/push system).

Press the “U” button, located on the control panel, until the display is activated. When the control is powering up, the message “OD” appears. Wait for the temperature to be displayed. Do not touch any of the control buttons or unplug your appliance. (approximately 4 minutes)

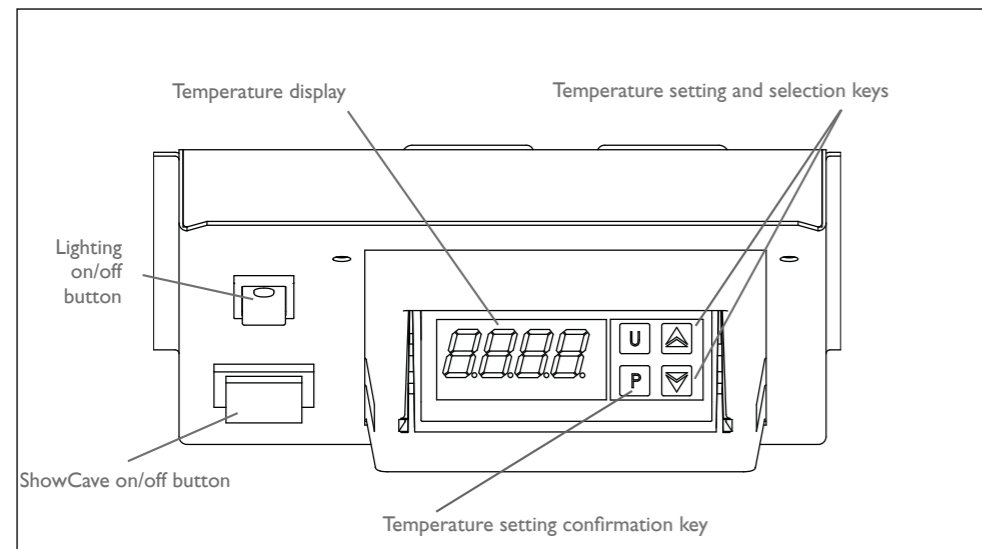


GB

7 - COMMISSIONING YOUR SHOWCAVE

III - Description of the control panel

The temperature of your ShowCave is set entirely from the control panel.



- **Temperature display:** Displays the actual temperature inside your ShowCave.
- **U button:** allows you to stop just the compressor (not the fans) by pressing and holding down the button.
- **P button:** allows you to confirm the temperature setting.

N.B.: the U button must not be used for turning on and off. **ONLY OPERATE THIS BUTTON IF TOLD TO DO SO BY OUR CUSTOMER SERVICES DEPARTMENT.**

IV - Temperature setting

To set the temperature of your ShowCave:

- Press the button ▲, and hold down for a few seconds. The symbol “SPI” will appear alternately with the previous temperature setting.
- Set the desired temperature using the ▲ and ▼ buttons.
- Confirm your programming by pressing and holding down button P for a few seconds.

Your programming will automatically be confirmed if no button is pressed in the 15 minutes following programming.

The recommended temperature setting range for storing and maturing wine is 9°C - 15°C, the default setting is 12°C.

To operate correctly, your ShowCave must be placed in a room with a temperature of 15 - 25°C.

! In some installation and setting conditions, condensation may appear on the doors of your ShowCave. Condensation is a natural phenomenon which occurs when the temperature difference between the ambient air and the glass surface of the doors is such that the moisture in the air condenses in the form of droplets. This phenomenon will increase in an environment where the humidity level is naturally high and/or will increase as a result of external parameters (occupants, plants, kitchen, dishwasher etc). Even if this situation is temporary and random, we still recommend that you increase the temperature setting from 1 - 2°C in order to reduce this phenomenon.

When you make significant changes to the set temperatures, your ShowCave may take several hours to stabilise and display the desired temperatures.

The cabinet's performance is optimised when it is filled to at least 75% of its capacity.

The temperature may require some time to stabilise when you have loaded your ShowCave with a large number of bottles.

This phenomenon may occur when you use the cabinet for the first time. It is not the result of an operating fault. Wait a few days. If, on the other hand, the phenomenon persists, contact your EuroCave retailer.

N.B.: Only prolonged exposure to temperatures outside the recommended range and temperature fluctuations are harmful to your fine wines.

Your ShowCave benefits from an automatic defrost cycle, which is activated every 4 hours for 15 minutes.

8 - EVERYDAY MAINTENANCE

Your EuroCave ShowCave is a tried and tested appliance. Carrying out the following maintenance work will ensure its longevity.

- Vacuuming the condenser's air inlets and outlets once a year is compulsory. This must be carried out by an approved technician.
- Once a year, thoroughly clean the inside of your ShowCave, after unplugging and unloading it (use a damp cloth, water and gentle cleaning product), then rinse thoroughly also using a damp cloth).

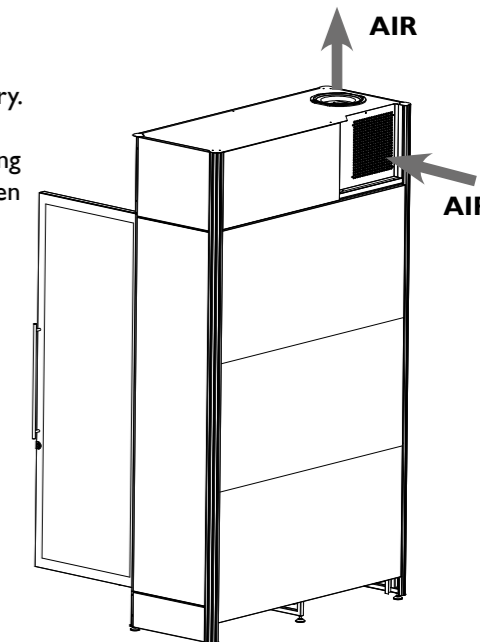
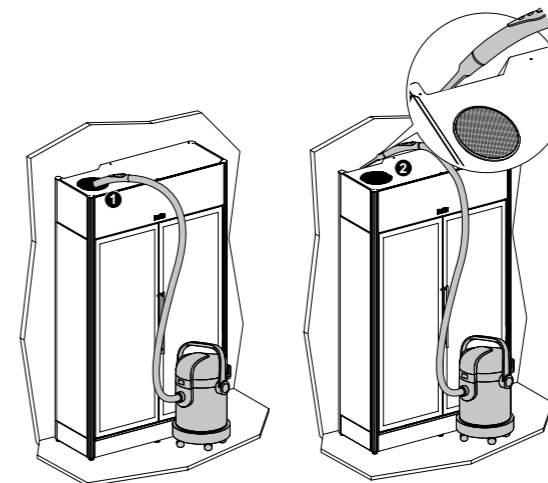


Diagram showing the air outlet / intake locations

In some temperature and ambient air humidity conditions, slight condensation may appear on the doors. This natural phenomenon (dew point) can be corrected by increasing the temperature setting by 1 or 2°C.

Regular monitoring of your appliance and reporting any faults to your retailer will ensure that your ShowCave provides you with years of faithful service.

9 - OPERATING FAULTS

Whatever the circumstances, if your appliance does not seem to be operating correctly, contact your EuroCave retailer.

- **When using the cabinet for the first time, if the compressor does not start up, check your power socket by plugging in any other electrical appliance.**
- **If the temperature sensor has a fault, the display will show “E1” or “-E1”.**
- **If the permitted temperature range is exceeded, below 3°C, the display will show “LO1”, and above 25°C, the display will show “HI1”.**

Any work on the cooling unit must be carried out by a qualified refrigerationist, who must perform a leak test on the circuit before powering up again.

In the same way, any work on the electrical system must be carried out by a qualified electrician.

10 - TECHNICAL FEATURES

Réf.	Dimensions in (mm)			Weight when empty (kg)	Permitted temperature range		Consumption per 24hrs* (kWh)
	H	W	D**		T° min	T° max	
9090V	2190	692	499	172	15°C	25°C	2,75
9180V	2190	1284	499	270	15°C	25°C	8,9

*Consumption per 24hrs measured with an external temperature of 25°C and a temperature setting of 12°C.

Control accuracy: +/- 1 °C – Display accuracy: +/- 0.5°C.

** Including handle

Your product complies with the following standards:

1 SAFETY (article 3. of directive 2006/95/EC)

Standard(s) EN60335-1 : 2001 + A1 + A2
EN60335-2-24 : 2002 + A1 + A2

2 EMC (Article 3. of directive 2004/108/EC)

Standard(s) EN55014-1/2

11 - STANDARD WINE SERVING TEMPERATURES

French wines

Alsace	10°C
Beaujolais	13°C
Sweet white Bordeaux	6°C
Dry white Bordeaux	8°C
Red Bordeaux	17°C
White Burgundy	11°C
Red Burgundy	18°C
Champagne	6°C
Jura	10°C
Languedoc-Roussillon	13°C
Provence Rosé	12°C
Savoie	9°C
Dry white Loire wines	10°C
Sweet white Loire wines	7°C
Loire reds	14°C
Rhône wines	15°C
Sweet white wines from the South West	7°C

Red wines from the South West	15°C
-------------------------------	------

Australian wines

Cabernet franc	16°C
Cabernet sauvignon	17°C
Chardonnay	10°C
Merlot	17°C
Muscat à petit grain	6°C
Pinot noir	15°C
Sauvignon blanc	8°C
Semillon	8°C
Shiraz	18°C
Verdhelo	7°C

Other wines

California	16°C
Chile	15°C
Spain	17°C
Italy	16°C

INHALTSVERZEICHNIS

1 • BESCHREIBUNG IHRES SHOWCAVE	S. 2
I- 9090V-Modell (1 Tür)	S. 2
II- 9180V-Modell (2Türen)	S. 2
2 • WICHTIGE SICHERHEITSHINWEISE	S. 3
3 • STROMVERSORGUNG	S. 3
4 • UMWELTSCHUTZ UND ENERGIESPARMASSNAHMEN	S. 4
5 • AUFBAU IHRES SHOWCAVE	S. 4-5
6 • AUSSTATTUNG - REGELE	
I- Nach dem Baukastenprinzip erweiterbare Regalsysteme	S. 6
II- Ratschläge für die Ausstattung Ihres ShowCave	S. 7
III- Änderung der Ausstattung Ihres ShowCave	S. 7
7 • INBETRIEBNAHME IHRES SHOWCAVE	
I- Stromanschluss	S. 7
I- Inbetriebnahme	S. 7
III- Beschreibung des Kontrollpanels	S. 8
IV- Temperatureinstellung	S. 8
8 • LAUFENDE WARTUNG	S. 9
9 • BETRIEBSSTÖRUNGEN	S. 9
10 • TECHNISCHE CHARAKTERISTIKA	S. 10
11 • NORMALE SERVIERTEMPERATUREN FÜR WEINE	S. 10



Leader dans le domaine de la conservation, la présentation et le service des vins depuis plus de 35 ans, EuroCave vous propose des solutions adaptées à chacun de vos besoins. Armoires à vins, rangements, climatiseurs de cave, système de Vin au verre... n'hésitez pas à contacter votre revendeur EuroCave pour toute information complémentaire !

Leader in the wine preservation, presentation and service sector for over 35 years, EuroCave offers you solutions adapted to every one of your requirements. Wine cabinets, storage layouts, cellar conditioners, wine by-the-glass system... don't hesitate to contact your EuroCave (or Around Wine) dealer for further information!

Seit mehr als 35 Jahren führend im Bereich der Lagerung, der Präsentation und dem Ausschank von Weinen schlägt Ihnen EuroCave Lösungen vor, die jedem Ihrer Bedürfnisse angepasst sind: Wein-, Zigarrenklimaschränke, Weinkeller-Kompaktklimaanlagen, Geräte für den glasweisen Offenausschank, Weinkeller-Regalsysteme. Zögern Sie nicht länger, setzen Sie sich mit Ihren EuroCave-Händler in Verbindung, wenn Sie noch irgendwelche Fragen haben!

Líder en el campo de la conservación, presentación y el servicio de vinos desde hace 35 años, EuroCave le propone soluciones adaptadas a cada una de sus necesidades. Bodegas, estanterías, climatizadores de bodegas, sistemas de vinos a la copa... ¡Para toda información complementaria, no dude en contactar a su distribuidor EuroCave!

Als wereldleider is het bewaren, serveren en presenteren van wijn, biedt EuroCave verschillende producten aangepast aan elke wens van een wijnliefhebber en wijnprofessional. Wijnkasten, wijnrekken, wijnkelderkoelingen, wijn per glas serveersystemen... aarzel niet om uw EuroCave dealer te vragen voor meer informatie!

Leader nel settore della conservazione, della presentazione e del servizio dei vini da più di 35 anni, EuroCave vi propone delle soluzioni adatte a ciascuna delle vostre esigenze. Cantinette per vini, sistemi di stoccaggio, climatizzatori da cantina, sistema di Vino al bicchiere... non esitate a contattare il vostro rivenditore EuroCave per qualsiasi informazione complementare!

